

## KIM-1 PAB

产品名称: Kim-1 兔多抗

货号: 21110

基因符号: Kim-1

描述: Kim-1 兔多抗

背景: Kidney injury molecule-1 (Kim-1) is a type 1 membrane protein with extracellular immunoglobulin and mucin domains. Kim-1 mRNA and protein are expressed at very low levels in normal kidney, but expression increases dramatically after injury in proximal tubule epithelial cells in postischemic rodent kidney and in humans during ischemic acute renal failure.

免疫原: A synthetic peptide from the internal region of Kim-1 of human origin

经过测试的应用: ELISA, WB, IHC, IP

推荐稀释比:

ELISA: 1:100-1:5000

WB: 1:200-1:1000

IHC: 1:50-1:100

**Concentration:** 0.2 mg/ml

种属反应性: Rabbit

形式: Liquid

克隆性: Polyclonal

亚型: IgG

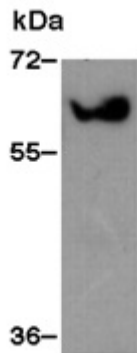
纯化: Purified from serum

成分: PBS (without  $Mg^{2+}$  and  $Ca^{2+}$ ), pH 7.4, 150 mM NaCl, 50% glycerol

种属反应性: Kim-1 antibody recognizes Kim-1 from vertebrates.

储存条件: Store at  $-20^{\circ}C$ . Avoid repeated freezing and thawing

## 蛋白质印迹:



WB: anti-Kim-1 pAb

HEK 293T cell lysate was used for western blot with Anti-Kim-1 兔多抗 (Cat # 21110).